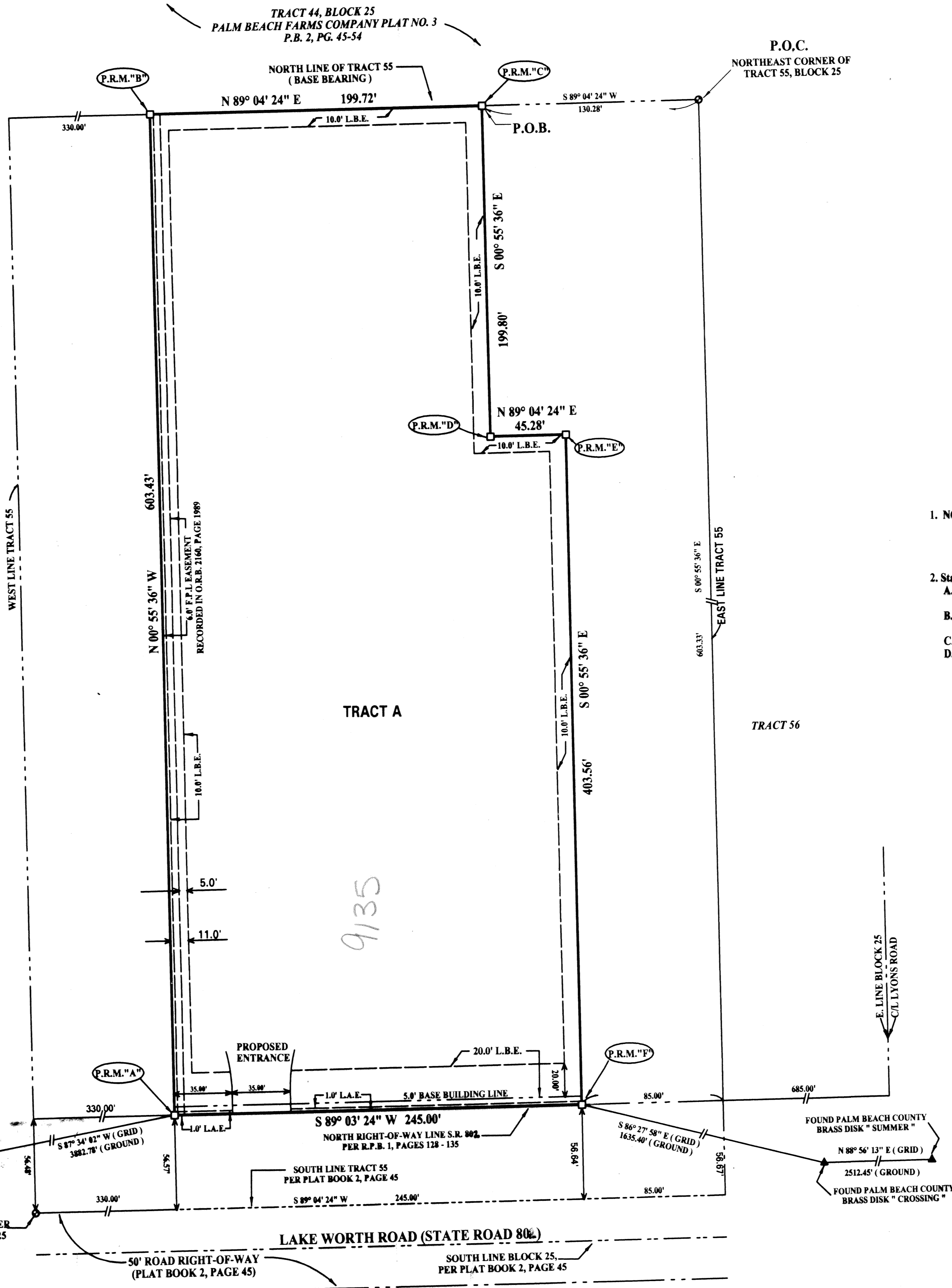
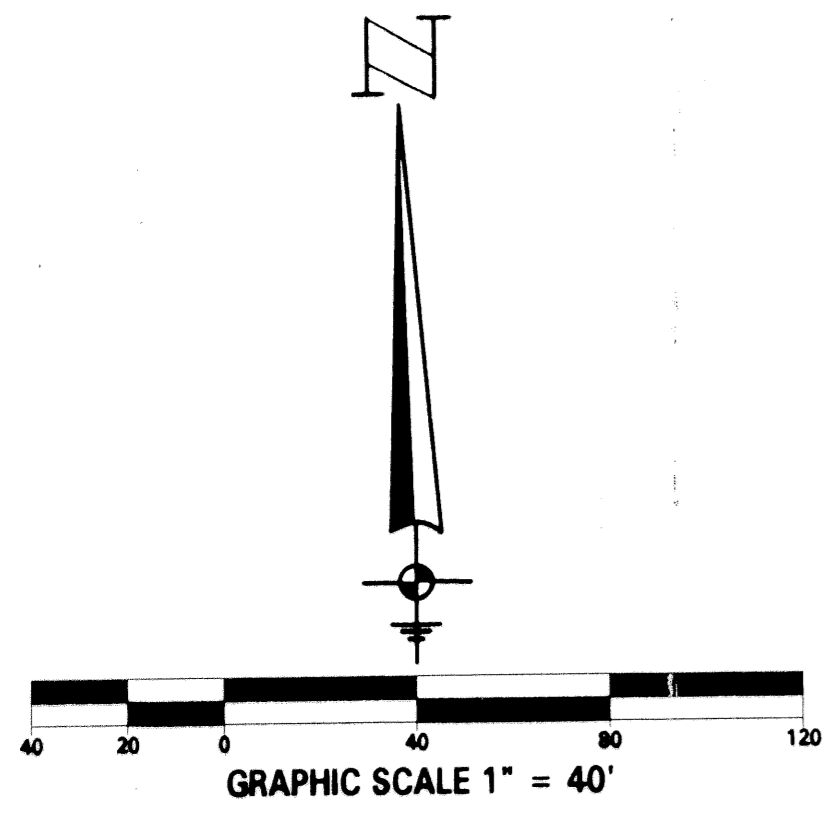


PLANET KIDS NO. III

BEING A REPLAT OF A PORTION OF TRACT 55, BLOCK 25, PALM BEACH FARMS COMPANY PLAT NO. 3, AS RECORDED IN PLAT BOOK 2, PAGES 45 THROUGH 54, LYING IN SECTION 30, TOWNSHIP 44 SOUTH, RANGE 42 EAST, PALM BEACH COUNTY, FLORIDA.
MARCH, 2001 SHEET 2 OF 2



ABBREVIATIONS AND LEGEND

- P.O.B. = POINT OF BEGINNING
- L.A.E. = LIMITED ACCESS EASEMENT
- L.B.E. = LANDSCAPE BUFFER EASEMENT
- C/L = CENTERLINE
- S.R. = STATE ROAD
- P.O.C. = POINT OF COMMENCEMENT
- R/W = RIGHT OF WAY
- R.P.B. = ROAD PLAT BOOK
- P.B. = PLAT BOOK
- ☐ = SET (P.R.M.'S) PERMANENT REFERENCE MONUMENT P.S.M. 2608

STATE PLANE COORDINATES		
North	East	Description
832151.6950'	916079.7510'	STATION "WOODS WALK"
830770.7890'	916032.4020'	STATION "LAKE 441"
830838.7910'	921789.0527'	STATION "CROSSING"
830885.4090'	924301.1317'	STATION "SUMMER"
830935.5994'	919911.7698'	PRM "A"
831538.9487'	919902.0038'	PRM "B"
831542.1736'	920101.7001'	PRM "C"
831342.3899'	920104.9293'	PRM "D"
831343.1211'	920150.2039'	PRM "E"
830939.5942'	920156.7262'	PRM "F"

SURVEYOR'S NOTES

1. NOTICE: This Plat, as recorded in its graphic form, is the official depiction of the subdivided lands described herein and will in no circumstances be supplanted in authority by any other graphic or digital form of the plat. There may be additional restrictions that are not recorded on this plat that may be found in the public records of this county.
2. State Plane Coordinates:
 - A. The coordinates shown hereon are state plane grid coordinates according to the transverse mercator projection of the Florida east zone, 1983 North American Datum, per the 1990 adjustment.
 - B. Bearings shown hereon are based on the grid bearing of North 89° 04' 24" East, along the North line of Tract 55 and all other bearings shown hereon are relative thereto.
 - C. The linear dimensions shown hereon are ground distances in U.S. feet and decimal parts thereof.
 - D. The ground distance to grid distance scale factor is 1.0000229 (ground distance x scale factor = grid distance).

PREPARING SURVEYOR'S STATEMENT

This instrument was prepared by DONALD D. DANIELS, 725 North A-1-A, Suite C-111, Jupiter, Florida 33477

<p>DONALD D. DANIELS, INC. Consulting Surveyors & Mappers</p>	PLANET KIDS NO. III	
	Florida Certificate LB No. 4165 725 North A-1-A, Suite C-111 Jupiter, Florida 33477 TEL: (561) 747-9894	REF: 2/45 OFFICE: S.F.B. DATE: March 2001

CHRISTOPHER Planet Kids No. 3
 PAGE 99
 FLOOD HAZARD ZONE B
 ZONING # 33467
 COUNTY 47B
 TAX 738
 PLANT 1/10/01 No. 3
 PREP NAME